

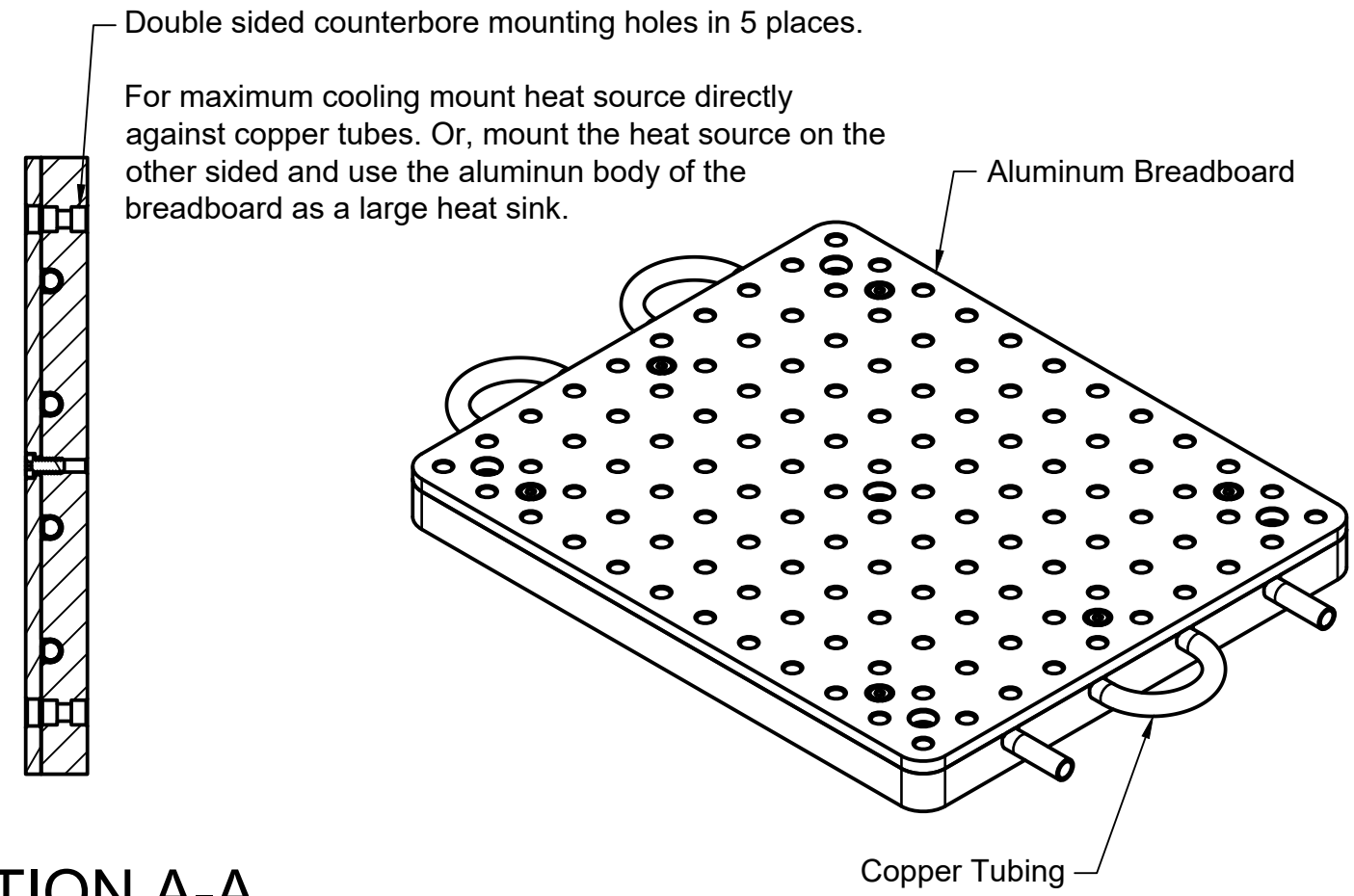
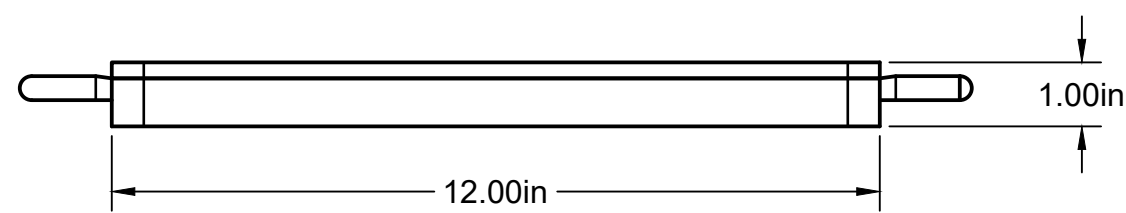
Double sided c-bore for 1/4-20 socket head cap screws (5 places)

A

1/4-20 Tapped holes on 1in centers

A

C-Bore to 1/4-20 Thru Hole to Hold Top Plate Firm And Flush Against BreadBoard (6 Places)



Double sided counterbore mounting holes in 5 places.

For maximum cooling mount heat source directly against copper tubes. Or, mount the heat source on the other sided and use the aluminum body of the breadboard as a large heat sink.

Aluminum Breadboard

Copper Tubing

SECTION A-A
SCALE 1:3

The liquid cooled breadboard is designed to be used with your chiller. For this to be used for cooling a chiller must be purchased separately.

Base Lab Tools Inc 140 N 2nd St, #3 Stroudsburg, PA 18360 www.BaseLabTools.com Phone: 570-371-5710		PROJECT			
		Support Drawing			
		TITLE			
		SAB1012-W-U Liquid Cooled Solid Aluminum Breadboard			
APPROVED JM	3/12/2018	SIZE	CODE	DWG NO	REV
CHECKED JM	3/12/2018	B		SAB1012-W-U	2
DRAWN BP	3/12/2018	SCALE 1:3	WEIGHT 16.6 lbs	SHEET 1/1	

For information only, not for manufacturing
 Item/Drawing is subject to change without notification
 © 2018 Base Lab Tools Inc, All Rights Reserved