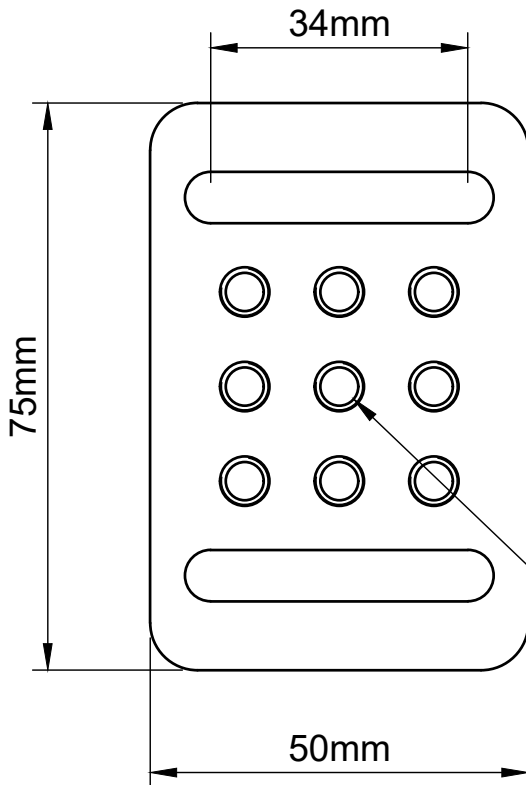


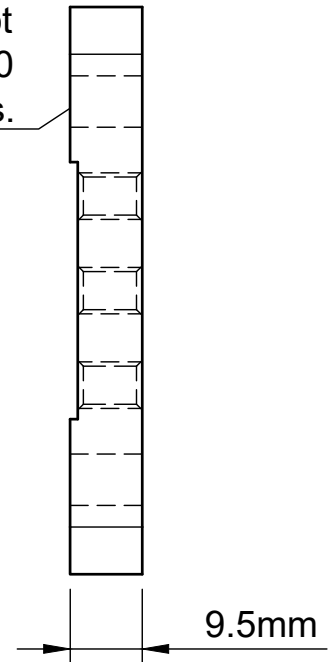
Features:

- Three-by-three array of M6 threaded holes.
- Ideal for mounting posts and post holders.
- Machined relief cut to assure a flat and stable mount to the surface.



Clearance slot for M6 or 1/4-20 cap screws.

9X M6 Threaded Holes



For information only, not for manufacturing. Subject to change without notice. © 2021 Base Lab Tools Inc, All Rights Reserved.

Dept.	Technical reference m=73g	Created by JPB	1/29/2021	Approved by JM	2/8/2021
Base Lab Tools 140 N 2nd St Stroudsburg, PA 18360 www.BaseLabTools.com Phone: 570-371-5710		Document type Support Drawing	Document status		
		Title 50mm X 75mm X 9.5mm Solid Aluminum Mounting Base	DWG No. B50X75A-M		
Rev.	4	Date of issue	2/10/2021	Sheet	1/1