

Part Numbering:

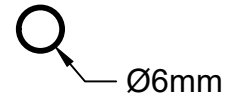
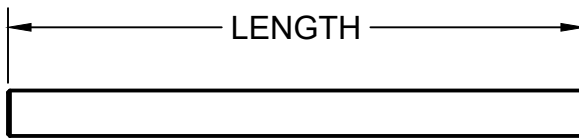
RXXX - The part number with no suffix is for the length of rod with no tapped holes.

RXXX-T1 - Includes tapped hole with 4-40 stud on one side.

RXXX-T2 - Includes tapped hole with 4-40 stud on both sides.

Features:

- Designed to work with industry standard cage systems.
- Made of RoHS-compliant, corrosion-resistant stainless steel.
- Available in custom lengths



Cage Rod Selection			
Item	Length	Item	Length
R010	1.0in	R060	6.0in
R015	1.5in	R080	8.0in
R020	2.0in	R100	10.0in
R030	3.0in	R120	12.0in
R040	4.0in	R180	18.0in
R050	5.0in	R240	24.0in

For information only, not for manufacturing. Subject to change without notice.
 © 2020 Base Lab Tools Inc, All Rights Reserved.

Base Lab Tools Inc 140 N 2nd St Stroudsburg, PA 18360 www.BaseLabTools.com Phone: 570-371-5710		PROJECT			
		Support Drawing			
		TITLE			
		Cage Rods for Optical Cage Systems			
APPROVED JM	5/29/2020	SIZE	CODE	DWG NO	REV
CHECKED JM	5/29/2020	A		RXXX	1
DRAWN JM	5/29/2020	SCALE 1:1		WEIGHT	SHEET 1/1