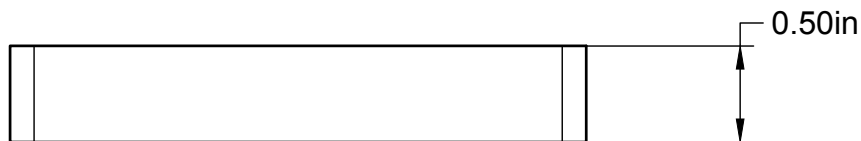


General purpose mounting clamp  
for use with BAS001 and BAS002



For information only, not for manufacturing. Subject to change without notice.  
© 2018 Base Lab Tools Inc, All Rights Reserved.

Base Lab Tools Inc 140 N 2nd St Stroudsburg, PA 18360 <a href="http://www.BaseLabTools.com">www.BaseLabTools.com</a> Phone: 570-371-5710			PROJECT			
			<b>Support Drawings</b>			
Dimensional Tolerances: 3 digits (X.XXX) ±0.005in 2 digits (X.XX) ±0.01in Angular ±30arcmin			TITLE			
			<b>CLA015L - General Long Mounting Clamp</b>			
APPROVED JM	9/28/2021	SIZE	CODE	DWG NO	REV	
CHECKED JM	9/28/2021	A		CLA015L	2	
DRAWN JE	9/28/2021	SCALE 1:1		WEIGHT 0.66 ounces	SHEET 1/1	