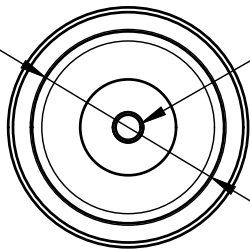
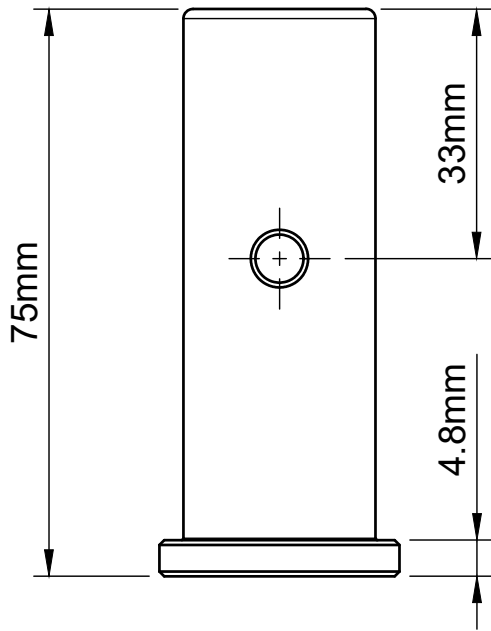
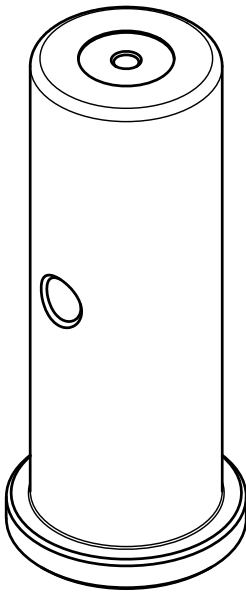


Ø25.4mm



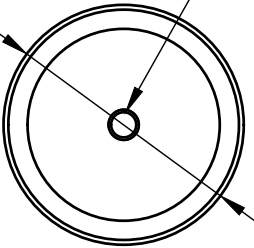
M4 Tapped Hole



**Features:**

- Ø1/4in thru hole to allow ball driver leverage when mounting.
- Machined from one piece of solid stainless steel.
- Compatible with Base Lab Tools clamping forks and pedestal clamps.
- Top and bottom undercuts for stability.

Ø31.8mm



M4 Tapped Hole

For information only, not for manufacturing. Subject to change without notice.  
 © 2021 Base Lab Tools Inc, All Rights Reserved.

Dept.	Technical reference m=305g	Created by JPB	3/19/2021	Approved by JM	3/19/2021
<b>Base Lab Tools Inc</b> 140 N 2nd St Stroudsburg, PA 18360 www.BaseLabTools.com Phone: 570-371-5710		Document type Support Drawing	Document status		
		Title PP75-M 75mm Pedestal Post	DWG No. PP75-M		
		Rev. 1	Date of issue 3/19/2021	Sheet 1/1	